

# MIMO

MOVING IN,  
MOVING ON!

## What is MIMO?

David Yoken

05.04.2011

TURKU • ÅBO 2011  
EUROPEAN CAPITAL OF CULTURE

# First there was OSLA

- OSLA, Old Spaces, Living Art, one of the 150 projects funded by Turku European Capital of Culture
- Exploring historical narratives related to Turku Castle.
- New working methods for art education and innovative ways for combining dance/movement, music/sound and animation.

# MIMO?

“MOVING IN, MOVING ON” means

*..youth gathering together to learn and grow and having the skills for a positive impact on their home and school environment also in future.*

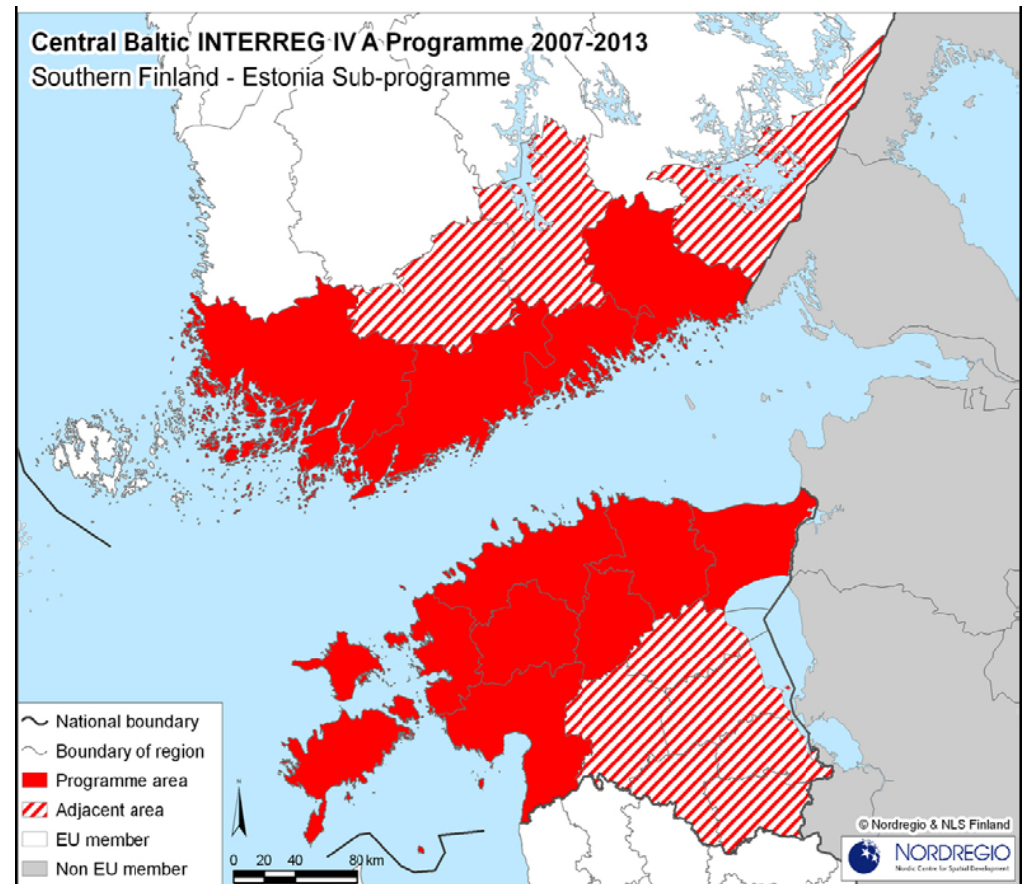
*..professionals also “moving in” to community youth work and then “moving on” to develop existing preventive youth work methods.*

# MIMO moves on

## 01.11.2010-31.12.2013

Priority: Attractive and  
Dynamic Societies ,  
Direction of Support:  
Social security and  
Well-being of different  
groups in society.

1,95 m€, over 50  
actors in 6 organisations



# MIMO´s starting point

1. social exclusion among youth, youth alienation and low level of school attractiveness
2. no comprehensive training, knowledge of professionals and applications of art-based methods in preventative youth work exist in Southern Finland and Estonia

# MIMO´s objectives

1. participatory creative group activities found in theatre and dance
2. concrete methods and tools for youth and social workers as well as artistic practitioners
3. an unique approach to documenting the project´s processes.

# Contact MIMO

Johanna Krappe, Project Manager

[johanna.krappe@turkuamk.fi](mailto:johanna.krappe@turkuamk.fi)

+358 (0)40 3550 529

Johanna Mattila, Financial Manager,

[johanna.mattila@turkuamk.fi](mailto:johanna.mattila@turkuamk.fi)

+358 (0)44 907 4959

